

Steps toward a Sidewalk Café Permit

1. The Transportation Engineering Division will go over all Layout measurements and specifications unique to your location which will determine the number of tables and chairs to be permitted.
2. The City Auditor and Clerk's Office will accept the application package once the layout is approved by Engineering.
3. The approval process for new applications requires 4 signatures: Neighborhood & Development Services Director, Risk Manager, Finance Director, and the City Engineer.

Sidewalk Café Permit only last for a calendar year therefore must be renewed every year prior to December 31st.

For any questions regarding layout requirements, measurements, or clearance contact us Monday thru Friday 11am to 3pm at the Neighborhood & Development Service, Engineering Division, City Hall Annex Bldg.

City of Sarasota, 1565 1st Street, Sarasota, FL

34236



CITY OF SARASOTA

CITY OF SARASOTA

Sidewalk Café General Requirements



For application information
please call 941-954- 4103
For layout information call
941-365-2200 ext 4405

CITY OF SARASOTA

Last Updated
3/06/2015

A café can vitalize a public space

The City of Sarasota downtown Master-Plan outlines design elements to develop and maintain a vibrant downtown/urban area with good pedestrian features and an active urban space. These features include having sufficient walking areas and outdoor seating and dining. The City of Sarasota welcomes these outdoor areas and also works to ensure access to shops, restaurants and stores. To accomplish both of these efforts, the City and the café operators will need to work together to develop a café plan that provides a sufficient clear walking area and allows for public seating. In addition, the café



area must remain clean and safe. To accomplish these goals, the City has developed rules and guidelines under

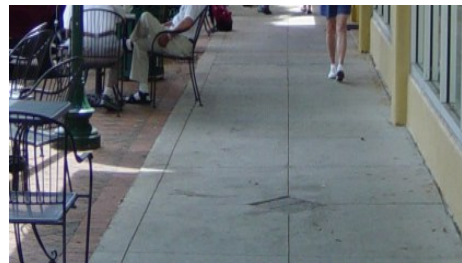
which the café must operate. Please take a moment to review these rules and inform your staff and patrons. If we work together, we can have great urban spaces.

I. Keeping a clear pedestrian access.

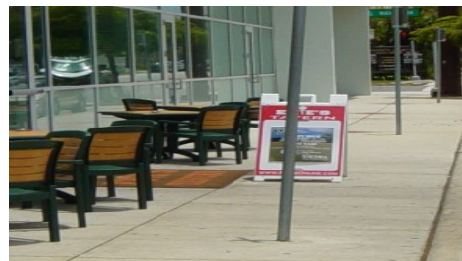
One of the most important requirements that we will review often is the Pedestrian Clear-Zone. Maintaining a minimum clearance for wheelchairs, pedestrians, the visually impaired, and strollers access is a City of Sarasota and Federal Law mandate. Refer to American Disable Act's Title VI for more information



Example of a good clear walk area



Example of an area with obstructions within the walk area.



People will move chairs on occasion but please, have staff adjust chairs as necessary to keep walkway clear. Inform your patrons to replace chairs when they are leaving. This will help keep walkway open. Please inform your staff that this is a pedestrian thoroughfare so they need to service the table without interference with the flow of pedestrians.

II. Keeping an area clean and free from hazardous material and litters.

Disposing properly of waste and keeping the sidewalk free of debris is important for patrons and the general public.



III. Posting a copy of your Café Permit & approved layout where they are visible to the public.

Posting the Permit & Layout is required so that City Officials, staff, patrons, and the general public can verify, support and help maintain the permit's mandate.

For rules, rights and requirements, please refer to Ordinance 09-4837 and your permit application.